

SeaSonde[®] Radial Site Application Guide for



RadialAdjuster



CODAR Ocean Sensors, LTD.
1914 Plymouth St, Mountain View, CA 94043 USA
Tel. (408) 773-8240 FAX (408) 773-0514

www.codaros.com

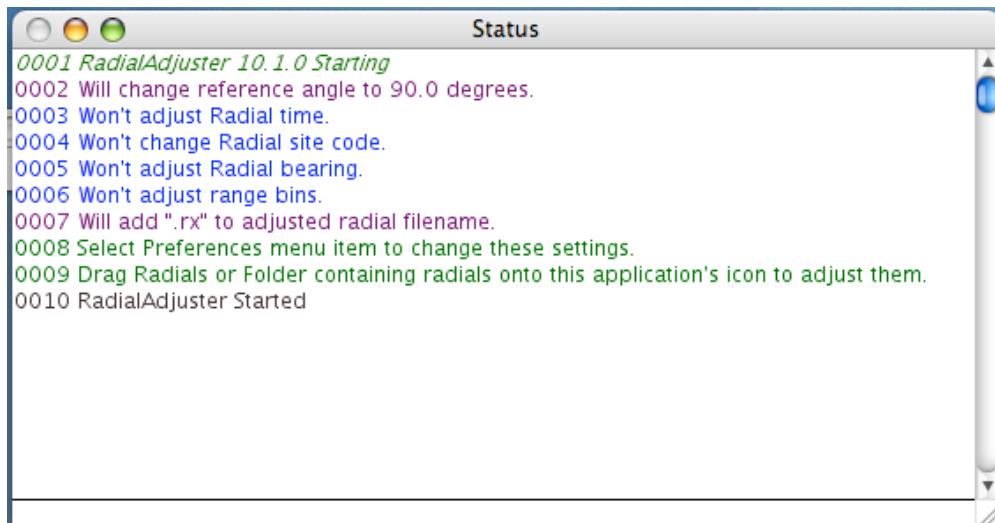
e-mail: support@codaros.com

©2005 CODAR Ocean Sensors, Ltd.

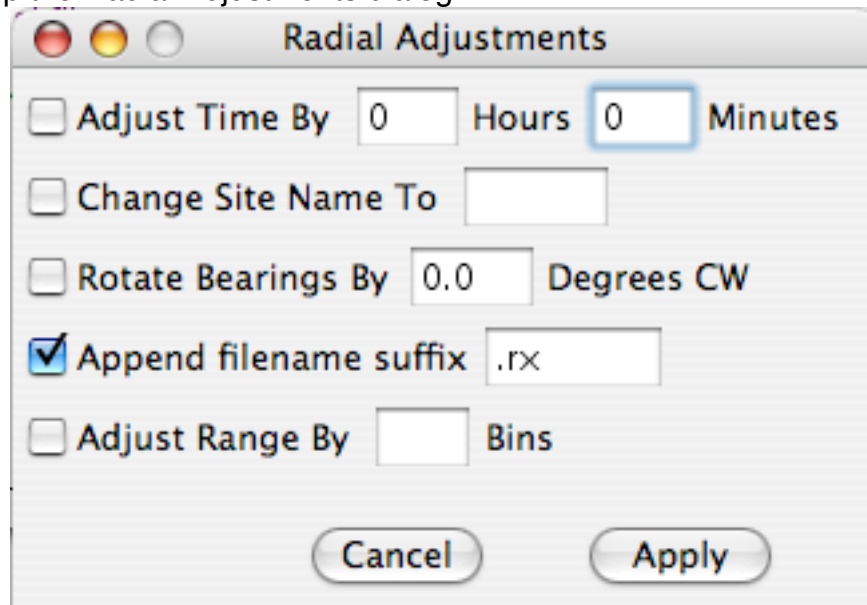
Nov 15, 2005

The RadialAdjuster application allows you to edit critical radial file header information that would otherwise be difficult to change by hand. The editable parameters are the ones that commonly elude detection but are critical for producing valid data. RadialAdjuster works with both Classic (OS 9) radial format and the newer LLUV radial format.

Open the application first before converting the radials. This way you can see what the current parameter adjustment settings are. The default settings for RadialAdjuster are shown in the Status window below. These settings will not alter a radial file.



To make an adjustment to the radials, select the Preferences... under the Edit menu. This brings up the Radial Adjustments dialog.



You can adjust a radial's time stamp, site name, rotation, and range.

Checkmark *Adjust Time* to correct radial time stamp. This will adjust the filename and the timestamp embedded in the file. This should only be done if the site's computer time was incorrect. The radials' time offset (from the correct time) must also be known. Enter the adjustment as Hours/Minutes or minutes only. The adjustment may be negative. A negative hours entry will also assume negative minutes. If you adjust the time, you must also append a filename suffix so that output files do not overwrite the existing source files (You may need these for future reference).

Checkmark *Change Site Name* to change the four-character site code. For Classic radials, this just changes the filename. For LLUV radials, this changes the filename and the embedded site name. Examples of where you might use this feature are: 1) if you had let the system run without a site code on initial startup or 2) you changed the site code and wanted the older radials to match the newer ones.

Checkmark *Rotate Bearing* to adjust all of the radial bearings in the file. This fixes radials that have been processed with an incorrect antenna bearing. For Classic radials, this adjusts all the bearing values. For LLUV radials, this adjusts the bearings and then recalculates the lat,lon x,y and vector direction values. This typically only needs to be done if the antenna was sighted incorrectly or the antenna was found to have rotated and the new rotation is known.

Checkmark *Append Suffix* to add a suffix to the output filenames to prevent the output from overwriting the original radials.

Checkmark *Adjust Range* to adjust the radials' range by range bins/cells. Each range cell in a radial has a fixed distance spacing, which is determined by the SeaSondeController bandwidth. This adjustment is to fix radials on SeaSonde's with upsweeps (uncommon) prior to SeaSonde10Release4. Enter a +1 to move the radial vectors outward one range cell (The first range cell for Classic radials will then have zero vectors).

Finally, drag a batch of selected radials or a folder containing the radials onto the application's icon to convert the radial files.